

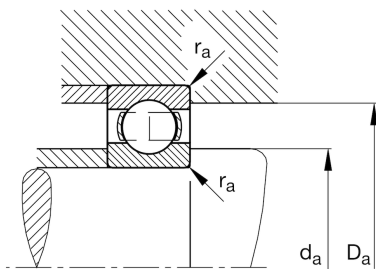
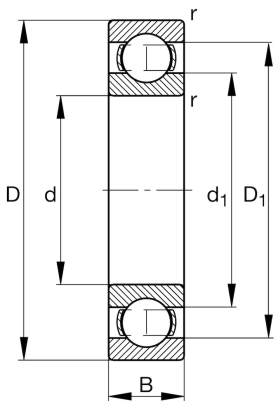
**FAG****S687-HLC**

Deep groove ball bearing

Materiálové číslo Schaeffler:
0552130650000

Deep groove ball bearing S68, corrosion-resistant materials, single row, steel sheet metal cage

Technické informace

**Main Dimensions & Performance Data**

d	7 mm	Bore diameter
D	14 mm	Outside diameter
B	3,5 mm	Width
C _r	999 N	Basic dynamic load rating, radial
C _{0r}	409 N	Basic static load rating, radial
C _{ur}	13,6 N	Fatigue load limit, radial
n _G	68.000 1/min	Limiting speed
≈m	2,03 g	Hmotnost

Mounting dimensions

d _{a min}	7,8 mm	Minimum diameter shaft shoulder
D _{a max}	13,2 mm	Maximum diameter of housing shoulder
r _{a max}	0,15 mm	Maximum fillet radius

Dimensions

r _{min}	0,15 mm	Minimum chamfer dimension
D ₁	12 mm	Shoulder diameter outer ring
d ₁	9 mm	Shoulder diameter inner ring

Temperature range

T _{min}	-30 °C	Operating temperature min.
T _{max}	120 °C	Operating temperature max.

Calculation factors

f ₀	11,4	Calculation factor
----------------	------	--------------------