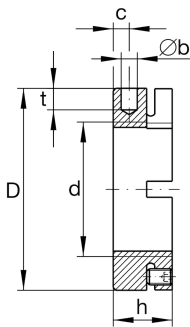
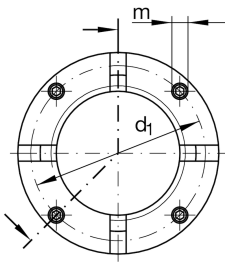
**AM85**

Precision locknut

Materiálové číslo Schaeffler:
0108423140000Precision locknuts AM, segments for
clamping

Technické informace

**Main Dimensions & Performance Data**

| | | |
|-----------------|-------------------------|---------------------------|
| d | M85X2 | Thread |
| D | 115 mm | Outside diameter |
| h | 30 mm | Height |
| F _{aB} | 690.000 N | Breaking load, axial |
| M _L | 930 Nm | Breakawag |
| M _{AL} | 180 Nm | Mounting torque reference |
| M _m | 24,8 kg*cm ² | Mass moment of inertia |
| ≈m | 850,27 g | Hmotnost |

Mounting dimensions

| | | |
|----------------|-------|---------------------------|
| M _m | 20 Nm | Mounting torque set screw |
|----------------|-------|---------------------------|

Dimensions

| | | |
|----------------|--------|--------------------------------------|
| b | 8 mm | Bore diameter blind hole |
| t | 10 mm | Depth blind hole |
| d ₁ | 102 mm | Pitch circle diameter 1 (holes) |
| c | 10 mm | Distance bore |
| m | M10 | Threaded - threaded pin |
| | H11 | Bore diameter blind hole housing fit |