

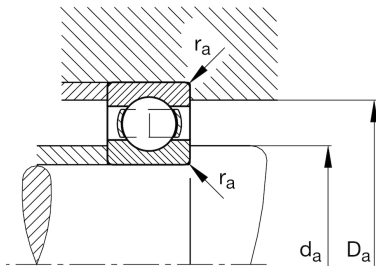
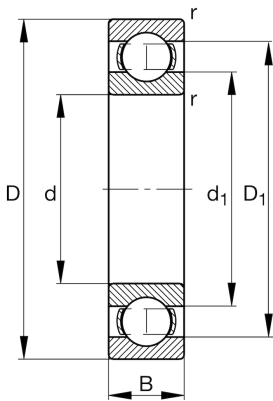
FAG

**6226-M**

Deep groove ball bearing

Schaeffler ID:  
0384052100000Deep groove ball bearing 62...-M, single  
row, solid brass cage

## Technical information

**Temperature range**

$T_{\min}$	-30 °C	Operating temperature min.
$T_{\max}$	150 °C	Operating temperature max.
	7,25 kg	Weight

**Main Dimensions & Performance Data**

d	130 mm	Bore diameter
D	230 mm	Outside diameter
B	40 mm	Width
$C_r$	177 000 N	Basic dynamic load rating, radial
$C_{0r}$	146 000 N	Basic static load rating, radial
$C_{ur}$	7 700 N	Fatigue load limit, radial
$n_G$	5 000 1/min	Limiting speed
$n_{gr}$	3 900 1/min	Reference speed

**Dimensions**

$r_{\min}$	3 mm	Minimum chamfer dimension
$D_1$	199,2 mm	Shoulder diameter outer ring
$d_1$	161,4 mm	Shoulder diameter inner ring

**Mounting dimensions**

$d_{a \min}$	144 mm	Minimum diameter shaft shoulder
$D_{a \max}$	216 mm	Maximum diameter of housing shoulder
$r_{a \max}$	2,5 mm	Maximum fillet radius

**Calculation factors**

$f_0$	14,5	Calculation factor
-------	------	--------------------